



FUSION X² EVAPORATOR



USER MANUAL
September 2022

LAPIERRE EQUIPMENT © All rights reserved - 2022



Naturally innovative

A leader in equipment and products for the maple syrup industry, LAPIERRE EQUIPMENT distinguishes itself by its ability to innovate and develop high-performance solutions. This is what enables it to make significant changes in production techniques and processes in order to increase crop yield of high quality syrup.

LAPIERRE EQUIPMENT has a wealth of experience accumulated over three generations of maple syrup producers. These are also people driven by passion and a deep desire to help the industry evolve with the utmost respect for nature.

Honoured to serve your customers

LAPIERRE EQUIPMENT is honoured to actively assist maple syrup producers during the sugar season.

Today you have made a wise choice for at least two good reasons: the superior quality of our products and the exceptional quality of all our expert advisers in the region.

We sincerely appreciate your trust. And we will be happy to serve you again in your future equipment purchases, regardless of the size of your sugar bush.

Thank you!

Lapierre Equipment Inc.

99 Rue de l'Escale, Saint-Ludger (QC) Canada G0M 1W0

819 548.5454 | 1 833 548.5454 | info@elapierre.com

www.elapierre.com





FUSION X² EVAPORATOR

Please note the information required below when dealing with customer service professionals. You can easily find this information on the **data plate** on your FUSION X² evaporator as well as on **your invoice**. You can also refer to *Section 1* of this manual for additional information.



The model shown may differ from your model.



IMPORTANT INFORMATION ABOUT YOUR FUSION X² EVAPORATOR

Customer Service: 819 548.5454 | 1 833 548.5454 | info@elapierre.com

Model number: _____

Serial number: _____

Purchase date: _____

Invoice number: _____

We will be pleased to answer any of your questions, please do not hesitate to contact us.

FUSION X² EVAPORATOR



- **OPTIFLAM™:** If you have an OPTIFLAM™ refer to APPENDIX C.
- **LATEST VERSION OF THIS USER'S MANUAL:** Please refer to our website for the latest version of this user's manual.

TABLE OF CONTENTS

LAPIERRE naturally innovative	C2
Important information about your FUSION X ² evaporator	1

SECTIONS

1. Where to find information about your equipment	5
2. Safety instructions	6
2.1 Instructions	6
2.2 Warning	6
- Electricity	6
- Liquids	6
- Other	6
2.3 Repairs and maintenance	7
3. Planning the installation of your evaporator	8
3.1 Locating your evaporator	8
3.1.1 Determining the location of the evaporator	8
3.1.2 Determining the chimney length	8
3.1.2.1 Listed chimney	8
3.1.2.2 Single wall chimney (non-listed)	9
3.1.3 Flashings, rain caps and steam vents	11
3.1.4 Preparing the location where the evaporator will be installed	12
3.2 Reception inspection	12
3.2.1 Evaporator condition	12
3.2.2 Purchase Order	12
3.2.3 Exact location of the evaporator in the building	12

4. Installation and component assembly.13

4.1 Levelling the evaporator13

4.2 Masonry and insulation. 14

4.3 Installing the chimney and the steam vents. 14

4.3.1 LWS listed chimney. 14

4.3.2 Single wall chimney (non-listed) 14

4.3.3 Steam vents. 14

4.4 Pan installation15

4.5 Connecting the draw-off components15

5. Start-up, operation and shutdown procedures. 16

5.1 Evaporator start-up. 16

5.1.1 Check connections for leaks and tightness 16

5.1.2 Check for leaks and floats. 16

5.1.3 Check the fans 16

5.2 Evaporator operation.18

5.2.1 Lighting up the combustion chamber18

5.2.2 Syrup production 20

5.2.3 Changing the syrup pan21

5.3 Evaporator shutdown21

6. Equipment maintenance and cleaning 22

6.1 Recommended maintenance at the start of the season 22

6.2 Recommended maintenance at the end of the season. 22

6.3 Annual replacement of parts, recommendation 22

6.4 Door cleaning and maintenance. 23

6.5 Evaporator cleaning. 23

7. Troubleshooting kit 24

7.1 No primary or secondary air fan operating 24

7.2 One of the primary or secondary air fans is not working 24

7.3 A temperature indicator does not work 25

7.4 One or two temperature indicators show erratic values or an error message. 25

7.5 The temperature of the combustion chamber is 1.5 times lower than that of the chimney 26

7.6 Poor evaporator performance 27

7.7 Solid deposits (staining) in the pans 29

7.8 The float does not close completely	29
7.9 Syrup colour and/or taste problems	30
7.10 Excessive steam output from the hoods	30
7.11 Smoke exhaust	31
8. Equipment specifications.	32
9. Our warranty (Warranty certificate)	35
10. Parts and consumables.	38

TABLE OF ILLUSTRATIONS

ILLUSTRATION 1 Levelling the FUSION X ² evaporator.	13
ILLUSTRATION 2 Typical illustration of a FUSION X ² evaporator.	34

TABLE OF TABLES

TABLE 1 Evaporator, chimney and vent sizes by model	10
TABLE 2 Grid for calculating the minimal height of the chimney	11
TABLE 3 Guide to the potentiometers for igniting the oven	19
TABLE 4 Temperature guide for syrup production.	20
TABLE 5 Potentiometer guide for combustion chamber fuel reloads	21

TABLE OF APPENDICES

APPENDIX A Installing the single-wall chimney (non-listed)	39
APPENDIX B Installing the steam vents.	41
APPENDIX C OPTIFLAM™ combustion controller (optional).	43



TABLE OF WARNINGS

Important information about your FUSION X ² evaporator.	1
Insurance: before installing your equipment.	5
Protect children.	7, 16
Safely installed on a horizontal and perfectly stable surface.	13
People near the equipment	16
Safety goggles, and heat-resistant gloves and clothing	18
Refractory concrete components on first firing	18
Rapid combustion chamber temperature rise may damage the arch	18
Cleaning product residue on all components	23
Keep your purchase invoice	35

SECTION 1 WHERE TO FIND INFORMATION ABOUT YOUR EQUIPMENT

When you contact our customer service professionals, it is important to have certain information about your equipment on hand as you will be asked for it.

You can easily find this information on the **data plate** on your FUSION X² evaporator as well as on your invoice. The **data plate** is located on the inside of the fan access door. This door is located behind the evaporator.

Information about the equipment	Data plate (affixed to your equipment)	Invoice
Model number	✓	✓
Serial number	✓	✓
Purchase date	-	✓
Invoice number	-	✓



INSURANCE: BEFORE INSTALLING YOUR EQUIPMENT

It is recommended that you contact your insurance company in order to confirm the compliance of your installation with its own requirements as these may differ from one insurance company to another.

2.1 INSTRUCTIONS

- It is important to read, understand and follow the instructions and warnings contained in this user manual.
- This manual must be stored in a known place and accessible at all times by staff.
- All product operators must be familiar with the contents of this manual.
- Certain instructions may not apply to your equipment, depending on your model.

2.2 WARNING

Electricity

- Before turning On the equipment, check the power supply specifications. You will find these specifications on the FUSION X² evaporator data sheet. Also check the specifications of the electrical circuit you intend to use. Then make sure that the two components are compatible.
- Never connect the electrical cords to overloaded electrical circuits.
- Never use extension cords that are longer than necessary or of low gauge.
- Make sure that the electrical cords are in good working order, that they are not pinched or stripped, and that they are not altered in any way that could affect their safe use.
- Never touch a stripped wire when it is live. Then turn Off the power and repair the equipment before turning it back On and using it.
- The user must check the grounding circuit. Some equipment must be used or connected to other equipment that is also equipped with a grounding circuit. Disabling or a malfunctioning of this circuit may cause equipment operating conditions that are hazardous to its users.
- Always turn Off the power to the equipment when not in use for extended periods of time.

Liquids

- Never expose the FUSION X² evaporator to rain or excessive condensation.
- Never bring liquids into contact with the electronic components.
- Unless otherwise specified, never submerge the electrical components of this equipment.

Other

- Always keep hair, hands, and jewellery away from equipment components that are operating, or may unexpectedly start up.
- Never place heavy objects on your equipment as their weight could damage parts of your FUSION X² evaporator.

2.3 REPAIRS AND MAINTENANCE

- Stop using the equipment immediately if a malfunction is detected.
- Only LAPIERRE EQUIPMENT authorized personnel may carry out repairs on this equipment.
- Unauthorized modifications or repairs may result in hazardous operating conditions. These conditions may also cause varying degrees of injury to users.
- Always disconnect the power supply before performing any maintenance or repairs.
- It is recommended that equipment inspections and maintenance be carried out diligently to ensure optimal operational integrity. See *Section 6: Equipment maintenance and cleaning* for more information.
- Never disassemble the electrical components of this equipment.



PROTECT CHILDREN

- Never allow children to use this equipment.
- Never leave children unattended in proximity to this equipment, whether it is switched On or not.

SECTION 3 PLANNING THE INSTALLATION OF YOUR EVAPORATOR

To reduce the risk of fire, electric shock or injury, it is important to follow these instructions when installing your equipment.

- The installation of the power supply must be done by a properly qualified contractor. The work must be carried out in accordance with the local regulations in effect.
- If you have to work in existing walls and ceilings, be careful not to damage electrical conduits or other utilities that may be present.
- Your FUSION X² evaporator must be installed on a horizontal and perfectly stable surface.

3.1 LOCATING YOUR EVAPORATOR

3.1.1 Determining the location of the evaporator

It is essential to plan for the installation of your new evaporator before you receive it. To help you, *Table 1: Dimensions of evaporators, chimneys and vents by model* shows you the dimensions to take into consideration. With these dimensions, you will be able to organize the installation and determine the conditions below.

- **IMPORTANT |** The space between the evaporator and the walls must allow for traffic as well as the safe operation of the equipment. This space must be more than 24 in. (60.96 cm) from each wall.
- There must be enough space on the draw off side to work safely.
- Determine the exact location of the evaporator in the building.
- Plan the installation of the concentrate supply lines.
- Plan the installation of the power supply.
- Determine where the evaporator chimney will pass through the ceiling and/or roof.
 - *Table 1* shows the dimensions needed in the ceiling and/or roof to accommodate the chimney.
 - It is recommended that the evaporator's chimney exhaust be centred between two roof trusses.
- Determine where the evaporator vents will pass through the ceiling and/or roof.
 - *Table 1* shows the dimensions of the ceiling and/or roof for the vent openings.

3.1.2 Determining the chimney length

Below you will find information on how to determine the minimum chimney length of your evaporator.

3.1.2.1 Listed chimney

From the location where the chimney will exit the roof, within a radius of 10 ft. (3.05 m), identify the highest obstacle. This may, for example, be the roof gable.

Complete *TABLE 2: Grid for calculating the minimum chimney height*, with the following data.

- a. Measure the height from the chimney exhaust location on the roof to the top of the obstacle (measurement a).
- b. Measure the height from the floor to the location of the chimney exhaust on the roof (measurement b).
- c. Add the heights measured in a and b. The result is the minimum height of the LWS listed chimney that you must install.

SECTION 3 Planning the installation of your evaporator (continued)

In this way, when the chimney rests on the FUSION X² evaporator connection, it is 3 ft. (91.44 cm) above the highest obstacle on the roof within the specified radius.

NOTE: The chimney must be installed with a minimum clearance of 2 in. (5.08 cm) from all combustible materials.

3.1.2.2 Single wall chimney (non-listed)

From the location where the chimney exhaust will be located on the roof, within a radius of 20 ft. (6.1 m), identify the highest obstacle. This may, for example, be the roof gable.

Complete *TABLE 2: Grid for calculating the minimum chimney height*, with the following data.

- a. Measure the height from the chimney exhaust location on the roof to the top of the obstacle then add 7 ft. (2.13 m) to the result (measurement a).
- b. Measure the height from the floor to the location of the chimney exhaust on the roof (measurement b).
- c. Add the heights measured in a and b. The result is the minimum height of the single-wall chimney that you must install.

In this way, when the chimney rests on the FUSION X² evaporator connection, it is 10 ft. (3.05 m) above the highest obstacle on the roof within the specified radius.

NOTE: The chimney must be installed with a minimum clearance of 24 in. (60.96 cm) from all combustible materials.

SECTION 3 Planning the installation of your evaporator (continued)

TABLE 1 | Evaporator, chimney and vent sizes by model

FUSION X ² EVAPORATOR				CHIMNEY, DIAMETER		STEAM					
Model No.	Range	Overall dimensions		Listed	Non-listed (single wall)	Diameter					
		Width	Length								
FF005-3008WWST	Standard	65 in. (1m65)	139 in. (3m53)	10 in. (25.4 cm)	14 in. (35.56 cm)	12 in. (30.48 cm)					
	Deluxe										
FF005-3010WWST	Standard						163 in. (4m14)				
	Deluxe										
FF005-3610WWST	Standard	72 in. (1m83)	163 in. (4m14)	12 in. (30.48 cm)	15 in. (38.10 cm)	17 in. (43.18 cm)					
	Deluxe										
FF005-3612WWST	Standard										
	Deluxe						187 in. (4m75)				
FF005-3612WWST 50/50	Standard										
	Deluxe										
FF005-4214WWST	Standard	77 in. (1m96)	211 in. (5m36)	14 in. (35.56 cm)	17 in. (43.18 cm)	17 in. (43.18 cm)					
	Deluxe										
FF005-4812WWST	Standard	83 in. (2m11)	187 in. (4m75)	14 in. (35.56 cm)	18 in. (45.72 cm)	20 in. (50.8 cm)					
	Deluxe										
FF005-4812WWST 50/50	Standard										
	Deluxe										
FF005-4814WWST	Standard						211 in. (5m36)				
	Deluxe										
FF005-4816WWST	Standard						235 in. (5m97)				
	Deluxe										
FF005-4816WWST 50/50	Standard										
	Deluxe										
FF005-6014WWST	Standard	95 in. (2m41)	211 in. (5m36)	16 in. (40.64 cm)	20 in. (50.8 cm)	20 in. (50.8 cm)					
	Deluxe										
FF005-6016WWST	Standard			18 in. (45.72 cm)							
	Deluxe										
FF005-6016WWST 50/50	Standard										
	Deluxe										
FF005-7214WWST	Standard	107 in. (2m72)	211 in. (5m36)	18 in. (45.72 cm)	20 in. (50.8 cm)	24 in. (60.96 cm)					
	Deluxe										
FF005-7216WWST	Standard										
	Deluxe						235 in. (5m97)				
FF005-7216WWST 50/50	Standard										
	Deluxe										

SECTION 3 Planning the installation of your evaporator (continued)

TABLE 2 | Grid for calculating the minimal height of the chimney

Listed chimney (see 3.1.2.1)	
Measurement (a)	
Measurement (b)	
TOTAL (add a + b) <i>Minimum required height for the installation of the LWS listed chimney (c)</i>	

Non-listed chimney (see 3.1.2.2)	
Measurement (a) = your measurement _____ + 7 ft. (2.13 m)	
Measurement (b)	
TOTAL (add a + b) <i>Minimum required height for the installation of the non-listed chimney (c)</i>	

Important note

- Your evaporator is supplied with all the necessary components for the safe installation of the LWS listed chimney. However, you must obtain the LWS listed chimney from your LAPIERRE EQUIPMENT representative.
- The performance of your evaporator has been measured with a standard installation with a 16 ft. (6.10 m) listed chimney. Also, your results may vary depending on your particular chimney installation.

3.1.3 Flashings, rain caps and steam vents

Below you will find information about flashings, rain caps, and evaporator steam vent outlets.

Flashings

Determine the slope of the roof by measuring the height over a horizontal distance of 12 in. (30.48 cm). This information will be necessary to order the flashings.

Rain caps

When ordering, you will also need to specify whether you want standard or rope operated rain caps.

Steam vents

- The openings of the evaporator hood steam vents will be made only after the equipment is installed in the building and subject to the obstacles in their way (see *Table 1: Evaporator, chimney and vent sizes by model*).
- The 2 steam vents, consisting of 2 x 3 sections of 4 ft. (1.22 m) each, are included with the evaporator, as are the two rope operated rain caps. When ordering, you will need to specify the roof pitch for the flashings and the choice between standard or Chinese rain caps, if desired. The hood is not included with the evaporator.

SECTION 3 Planning the installation of your evaporator (continued)

3.1.4 Preparing the location where the evaporator will be installed

You will be notified of the delivery date of your evaporator.

- Determine the exact location of the evaporator in the building.
- Before delivery date, make sure that all necessary work required for moving your evaporator to its final location is completed.

3.2 RECEPTION INSPECTION

Here is a checklist to complete when you receive your evaporator.

3.2.1 Evaporator condition

- Check the condition of the evaporator as soon as it arrives.
- Although LAPIERRE EQUIPMENT applies rigorous quality control in the plant and before shipping, please note, photograph and advise your LAPIERRE EQUIPMENT representative of any defects or imperfections that may be observed on the day your equipment is received.

3.2.2 Purchase Order

- Have the purchase order on hand.
- Confirm by visual count that you have received all items such as concentrate, chimney and vent connectors and all other items indicated on the purchase order.
- Also ensure that all items are in good condition.

3.2.3 Exact location of the evaporator in the building

Our staff will drop off the evaporator at the location you designate. It is important that the location is accurate. Once on the ground, moving the evaporator is difficult and may cause damage to the evaporator and/or the building.

SECTION 4 INSTALLATION AND COMPONENT ASSEMBLY

To reduce the risk of fire, electric shock or injury, it is important to follow these instructions when installing your equipment.

- The installation of the power supply must be done by a properly qualified contractor. The work must be carried out in accordance with the local regulations in effect.
- If you have to work in existing walls and ceilings, be careful not to damage electrical conduits or other utilities that may be present.



Your FUSION X² evaporator must be **SAFELY INSTALLED ON A HORIZONTAL AND PERFECTLY STABLE SURFACE**. If it tips or tilts, it may cause severe injury or burns to the operator and others in the vicinity of the equipment. Its weight and the heat of its contents present a real danger.

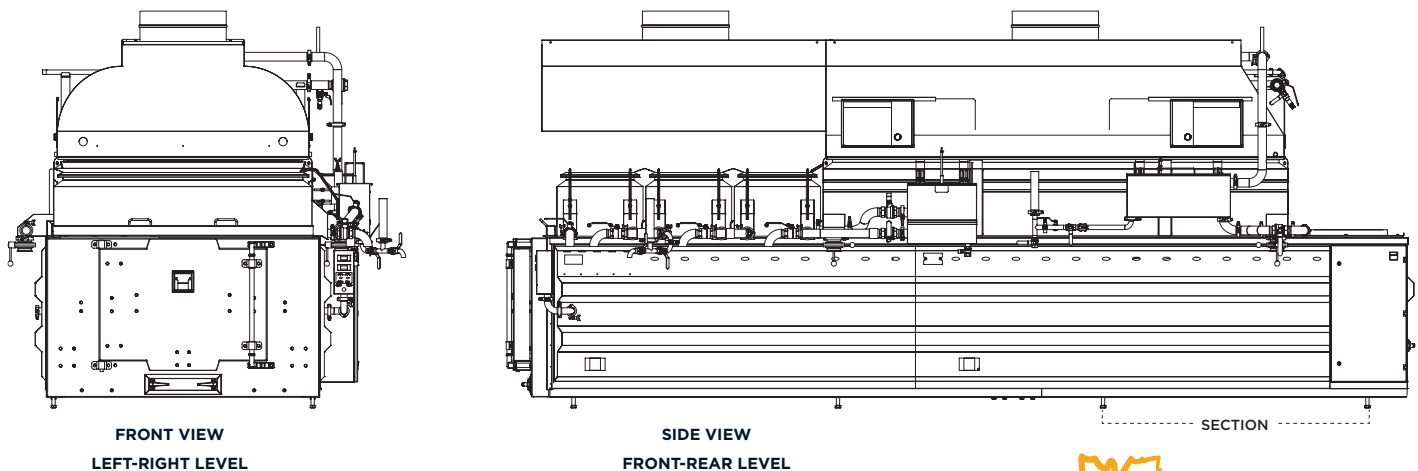
4.1 LEVELLING THE EVAPORATOR

On receipt, the evaporator will have been placed at its exact location in its space. This location must comply with the conditions set out in *Section 3.1.1: Determining the location of the evaporator*, in terms of mode of operation, required clearances and positions of the chimney and vents in the ceiling and/or roof.

IMPORTANT | It is very important that the evaporator is level and perfectly horizontal for proper operation. Levelling can be done with the pans in place or with the evaporator combustion chamber alone.

The evaporator is equipped with height-adjustable legs to allow levelling of the equipment. Below you will find the steps to follow.

ILLUSTRATION 1 | Levelling the FUSION X² evaporator



The part of the evaporator that lies between two side legs is called a SECTION.

SECTION 4 Installation and component assembly (continued)

- Evaporator LEFT-RIGHT level.
 - a. Using a level, adjust the left and right legs of the front section of the evaporator to bring it perfectly level.
 - b. Repeat step (a) for the rear section of the evaporator.
- Evaporator FRONT-REAR level.
 - NOTE: The part of the evaporator that lies between the two side legs is called a SECTION. See *Illustration 1* above.
 - a. From the front of the left side, adjust the first section so that it is level.
 - b. In the same way, extend the levelling of all sections backwards from leg to leg.
 - c. Check if the rear section is still on the left-right level.
 - If not, adjust the rear leg on the opposite side to bring this section back to level.
 - d. Repeat steps (a) (b) and (c) for the right side of the evaporator.
- Check all LEFT-RIGHT and FRONT-REAR levels and adjust as necessary until the evaporator is perfectly level. You may need to repeat this step a few times.

Place the pans in the evaporator.

- Fill the pans with water to check if the evaporator is still level.
- Your evaporator is considered level if it meets the following tolerance:
 - measure the height from the water surface to the rim in each corner of the pan,
 - the difference between the highest and lowest height must be less than 1/8 in. (4 mm),
 - otherwise, the previous levelling steps must be repeated.

4.2 MASONRY AND INSULATION

The masonry and insulation work has already been done at the plant on your FUSION X² evaporator.

4.3 INSTALLING THE CHIMNEY AND THE STEAM VENTS

4.3.1 LWS listed chimney

See the user manual for the listed chimney. Copies of the manual are located with your evaporator's documents and in the rain cap box.

4.3.2 Single wall chimney (non-listed)

See *Appendix A* for single wall chimney installation.

4.3.3 Steam vents

See *Appendix B* for steam vent installation.

4.4 PAN INSTALLATION

Below are the installation instructions for the evaporator pans.

- Place the pans on the evaporator.
- Place the insulation joints between the pans.
- Make sure that the pans are leaning toward the back of the evaporator.
- Using the pushers, press the pans together.

4.5 CONNECTING THE DRAW-OFF COMPONENTS

Maple sap connectors

All the maple sap evaporator connections required for its operation are in the same package. The gaskets for each of the connectors are identified by letters. Then simply connect the joints that have the same letters: A with A, B with B, etc.

Connection steps.

- Install the cold float box.
 - If applicable: install the hot float box.
 - Install all of the following connections between:
 - the boiling rear pan and the hot float box,
 - the hot float box and the syrup front pan,
 - if applicable, the syrup front pans.
- Tighten all these connectors sufficiently to hold them in place, but not completely.
- Adjust the position of the hot float box.
 - Tighten all installed connectors securely.
 - Install the connectors to the syrup pans.
 - Tighten the connectors sufficiently to hold them in place, but not completely.
 - Check all components for proper alignment.
 - Tighten the connectors securely.
 - If applicable: install the connection between the cold float box and the preheater outlet.
 - Install the sap or concentrate feed connector between the basin and the intake of the preheater or cold float box, as applicable.
 - Connect the concentrate feed.

SECTION 5 START-UP, OPERATION AND SHUTDOWN PROCEDURES



PROTECT CHILDREN

- Never allow children to use this equipment.
- Never leave children unattended in proximity to this equipment, whether it is switched On or not.



Also be especially cautious with other **PEOPLE NEAR THE EQUIPMENT**, whether they are children, family members, guests, as well as with pets.

5.1 EVAPORATOR START-UP

The following are the steps to start up the evaporator.

5.1.1 Check connections for leaks and tightness

Check the following connections for leaks and tightness:

- the concentrate connector,
- the pan connector.

5.1.2 Check for leaks and floats

- Fill the pans with water, then perform the following checks and adjustments:
 - check for leaks,
 - check for proper operation of each level float,
 - adjust the float for the desired liquid level of the pan(s):
 - o the level of the boiling rear pan should be 1 in. (2.54 cm) above the tubes,
 - o the minimum level of each syrup pan for start-up is 2 in. (5.08 cm).

5.1.3 Check the fans

IMPORTANT | Before each start-up of your evaporator, it is important to make sure that the fans are working properly.

Your evaporator is equipped with two or three fans depending on the model: one or two fans for primary combustion and one fan for secondary combustion. The purpose of these fans is to activate the combustion and increase the power of your FUSION X².

Used first, the primary air fan(s) pushes air under the fuel load and feeds the fire's rise. The secondary air fan then pushes air over the load to complete the combustion, improving the efficiency of the evaporator and eliminating smoke emissions.

Fan operation is controlled by two potentiometers (rotary knobs). One for the primary air fan(s), and the other for the secondary air fan.

SECTION 5 **Start-up, operation and shutdown procedures (continued)**

Follow these steps to verify the operating condition of your fans.

1. Make sure the main circuit breaker in the electrical box for the evaporator is in the On position.
 2. Also make sure that all circuit breakers located inside the electrical box are in the On position.
 3. Set both potentiometers to the POSITION Ø (Zero).
 4. Turn the key to the On position.
 5. Turn the potentiometer for the SECONDARY air fan to POSITION 4.
 6. The door located behind the evaporator allows access to the fans. Make sure that the highest fan is drawing air. If this is the case, continue the operation. If not, do not start the evaporator.
 7. Turn the potentiometer for the SECONDARY air fan to POSITION Ø (Zero).
 8. Turn the potentiometer for the PRIMARY air fan(s) to POSITION 4.
 9. The door located behind the evaporator allows access to the fans.
 - If your model has only one fan: make sure that the lowest fan is drawing air. If this is the case, continue the operation. If not, do not start the evaporator.
 - If your model has two fans: make sure that the two lowest fans are drawing air. If this is the case, continue the operation. If one of the two fans is not drawing air, do not start the evaporator.
- Note | Evaporators measuring 4 feet or less in width only have one primary air fan, whereas evaporators measuring 5 feet or more in width have two primary air fans.
10. Turn the potentiometer for the PRIMARY air fan(s) to POSITION Ø (Zero).

SECTION 5 Start-up, operation and shutdown procedures (continued)



Hot syrup can cause severe burns. Always wear **SAFETY GOGGLES and HEAT-RESISTANT GLOVES AND CLOTHING** when working with this equipment.

5.2 EVAPORATOR OPERATION



REFRACTORY CONCRETE COMPONENTS ON FIRST FIRING must be heated at a low temperature to complete their cure and ensure a better longevity. Therefore, it is important to maintain the maximum temperature of the combustion chamber at 1200 °F (650 °C) for at least 4 hours.

5.2.1 Lighting up the combustion chamber

To do pre-ignition

- Remove all ash from the combustion chamber floor.

Pre-ignition check

- Check:
 - operation of the fans,
 - if there are concentrate leaks,
 - the correct positioning of the pans,
 - that the insulation joints between each pan are in good condition and compressed,
 - that the evaporator is well supplied with concentrate,
 - the amount of the concentrate reserve to be boiled,
 - that the amount of liquid in each pan is sufficient to function.

Clean the door window combustion chamber side before any firing as recommended in *Section 6.4: Door cleaning and maintenance, Ceramic window*.

- Check:
 - the proper condition of the gasket between the pans and the combustion chamber,
 - that the following valves are fully open:
 - o concentrate supply,
 - o from the boiling rear pan to the syrup front pan,
 - o from the hot float,
 - that the unit is switched ON.

Lighting up the combustion chamber



A **RAPID COMBUSTION CHAMBER TEMPERATURE RISE MAY DAMAGE THE ARCH**. The following firing procedures are recommended.

- Use plenty of paper and cardboard to prepare your load.
- Place your load on the front half of the combustion chamber.
- Ignite the load; close the door; and turn the potentiometer (rotary knob) for the PRIMARY air fan(s) to POSITION 2 and the SECONDARY air fan to POSITION Ø (Zero), for one to two minutes each.

SECTION 5 **Start-up, operation and shutdown procedures (continued)**

- Check that the combustion chamber fuel load is lit through the combustion chamber window.
- After 2 minutes and/or when the combustion chamber fuel load is well lit, leave the potentiometer for the PRIMARY air fan(s) in POSITION 2, and turn the one for the SECONDARY air fan to POSITION 3.
- Monitor the temperature level indicators.
 - The combustion chamber temperature should rise faster and be higher than the chimney temperature.
- When the combustion chamber temperature reaches 1000 °F (540 °C) or if the temperature stops rising and starts to drop, turn all the air fan potentiometers to the Ø (Zero) position.
- To avoid flashback, wait 5 to 10 seconds before opening the combustion chamber door.
- Using a long poker, push the combustion chamber load backwards.
- Then place a feeder load of wood one to two logs thick over the entire surface of the combustion chamber. Start by loading the rear and finish at the front.
- Close the door.
- Turn the PRIMARY air fan(s) potentiometer to position 2, and the SECONDARY air fan potentiometer to POSITION 3.
- After 2 minutes, turn the PRIMARY air fan(s) potentiometer to POSITION 4, and the SECONDARY air fan potentiometer to POSITION 2.
- It is recommended to use 32 in. (81.28 cm) long pieces of wood with a maximum diameter of 8 in. (20.32 cm).

TABLE 3 | Guide to the potentiometers for igniting the oven

GUIDE TO THE POTENTIOMETERS FOR IGNITING THE OVEN			
Starting load	Igniting the fire	PRIMARY = 2	SECONDARY = Ø (Zero)
	AFTER 2 minutes of ignition	PRIMARY = 2	SECONDARY = 3
Feeding load	BEFORE the load	PRIMARY = Ø (Zero)	SECONDARY = Ø (Zero)
	Immediately AFTER	PRIMARY = 2	SECONDARY = 3
	AFTER 2 minutes	PRIMARY = 4	SECONDARY = 2

Once the fire is started check

- Underneath the combustion chamber: check for smoke or hot air leaks.
- At the gaskets: check for leaks of smoke or hot air.
- Chimney: check for smoke or hot air leaks.
- Each pan: check the boiling distribution.
- Once the evaporator is boiling there shall be very minimal to no visible smoke emitted, except immediately after reloading the combustion chamber.

5.2.2 Syrup production

Below is a list of points to check when making maple syrup.

- Monitor the WATER LEVEL in each of the pans.
- Monitor the TEMPERATURE OF THE COMBUSTION CHAMBER.
 - The reference temperature of the combustion chamber to maintain is: **1500 to 1600 °F (816 to 871 °C)**.
 - LAPIERRE EQUIPMENT suggests using this reference as a temperature to familiarize yourself with the operation of your evaporator.
 - The chimney temperature MUST NEVER EXCEED 1000 °F (540 °C).
 - o If this is exceeded, set the PRIMARY air fan(s) potentiometer to POSITION 2 and the SECONDARY air fan potentiometer to POSITION 9 (maximum) until the chimney temperature drops below 950 °F (510 °C).
 - Compensate for the decrease in combustion chamber temperature by increasing PRIMARY air ventilation.
 - If, despite the fact that you have gradually raised the potentiometer of the PRIMARY air fan(s) to POSITION 6, the temperature of the combustion chamber remains 200 to 250 °F (93 to 121 °C) lower than the temperature you have chosen to maintain, then you must perform a combustion chamber reload.

TABLE 4 | Temperature guide for syrup production

TEMPERATURE GUIDE FOR SYRUP PRODUCTION		
Combustion chamber	Reference	1500 to 1600 °F (816 to 871 °C)
	Decreasing	Increase ventilation in PRIMARY air
	PRIMARY air at POSITION 6 and 200 to 250 °F (93 TO 121 °C) below the selected temperature	Do a reload
Chimney	Maximum	1000 °F (540 °C)

- COMBUSTION CHAMBER FUEL reloads.
 - Turn the potentiometers on all air fans to POSITION Ø (Zero).
 - To avoid flashback, wait 5 to 10 seconds before opening the combustion chamber door.
 - Using a long poker, spread the coals in an even layer over the entire surface of the combustion chamber.
 - Then place a one to two log thick combustion chamber fuel reload on the entire surface of the firebox. Start by loading the rear and finish at the front.
 - Close the door.
 - Turn the PRIMARY air fan(s) potentiometer to POSITION 2, and the SECONDARY air fan potentiometer to POSITION 4.
 - After 2 minutes, turn the PRIMARY air fan(s) potentiometer to POSITION 4, and the SECONDARY air fan potentiometer to POSITION 2.
- Regularly check the Brix concentration of the syrup.
 - Take the sample in the pan right next to the syrup outlet.

SECTION 5 Start-up, operation and shutdown procedures (continued)

TABLE 5 | Potentiometer guide for combustion chamber fuel reloads

POTENTIOMETER GUIDE FOR COMBUSTION CHAMBER FUEL RELOADS		
BEFORE the reload	PRIMARY = Ø (Zero)	SECONDARY = Ø (Zero)
Immediately AFTER the reload	PRIMARY = 2	SECONDARY = 4
AFTER 2 minutes	PRIMARY = 4	SECONDARY = 2

5.2.3 Changing the syrup pan

Below are the instructions to follow when changing the syrup front pan.

- Check the condition of the gasket between the pans and the combustion chamber.
- Check the insulation joints between the pans.
- **- IMPORTANT:**
 - a syrup soiled gasket must be cleaned,
 - a blackened or damaged gasket must be replaced immediately or very quickly.
- Check that there are no concentrate leaks under the boiling rear pan.
- Check the boiling rear pan for cleanliness and accumulation of sugar stones.
- Before replacing the syrup front pan, make sure the fireproof bead is fully raised to its position.

5.3 EVAPORATOR SHUTDOWN

Below are the instructions for shutting down your evaporator.

- Make sure you have a minimum reserve of 2 hours of concentrate or water.
- Stop feeding the combustion chamber.
- Although the coals burn out quickly it should be noted that the heating of the pans will continue for some time due to the accumulated heat in the evaporator.
- Turn the key to the Off position. Note that all fans will continue to run for a period of 2 hours.
- After 2 hours:
 - turn Off the water or concentrate supply to the evaporator,
 - close the valve located between the boiling rear pan and the syrup front pan,
 - if applicable, close the valves between the syrup pans.

SECTION 6 EQUIPMENT MAINTENANCE AND CLEANING

Below are the points to remember for recommended maintenance at the start and end of the season.

6.1 RECOMMENDED MAINTENANCE AT THE START OF THE SEASON

- Remove the pans, inspect the following items and replace as needed:
 - the insulation joint between the combustion chamber and the pans,
 - the pan divider insulated joints,
 - the rear joint where the boiling pan rests,
 - the condition of the walls of the combustion chamber,
 - the front pusher.
- Inspect the pans for leaks and repair or replace as necessary.
- Inspect the chimney for internal damage and obstructions such as a bird's nest or other foreign objects.
- Replace the insulation joints on the ferrules and connectors.
- Lubricate the sliding joints of the piping with food grade grease.
- Assemble the equipment.

6.2 RECOMMENDED MAINTENANCE AT THE END OF THE SEASON

- Clean pans.
- Make sure the steam vents and chimney are closed properly.
- Remove the pans, inspect the following items and replace as needed:
 - the insulation joint between the combustion chamber and the pans,
 - the pan divider insulated joints,
 - the rear joint where the boiling pan rests,
 - the condition of the walls of the combustion chamber,
 - the front pusher.
- Inspect the pans for leaks and repair or replace as necessary.

6.3 ANNUAL REPLACEMENT OF PARTS, RECOMMENDATION

We recommend that you replace certain parts of your evaporator every year, especially materials enabling:

- the insulation of the glass and the door,
- the sealing of the door,
- the insulation between the pans and the frame,
- the pan insulation joints.

6.4 DOOR CLEANING AND MAINTENANCE

Below are the instructions for cleaning and maintaining the evaporator door.

Ceramic window

- Cleaning the window from the inside. You may use either of the following two methods:
 - a paste designed for the maintenance of ceramic cook tops with a cloth,
 - ash with paper towels or a damp cloth.
- Replacing the glass, exterior:
 - first unscrew the stainless steel frame,
 - remove the insulation joint that holds the glass in place,
 - remove the glass and replace it with your new glass,
 - replace the new insulation joint in the correct position,
 - screw the stainless steel frame back in place.

6.5 EVAPORATOR CLEANING

- The stainless steel components of your equipment must be cleaned with a product specifically designed for this purpose. **Do not use flammable liquids.**
- Never use abrasive products, products containing chlorine or muriatic acid (also called hydrochloric acid) to clean the components of your evaporator.
- The use of wire brushes and steel wool should also be avoided.



During prolonged storage, even the slightest **CLEANING PRODUCT RESIDUE ON ALL COMPONENTS** may lead to damage of the equipment. Rinse each cleaned component thoroughly.

7.1 NO PRIMARY OR SECONDARY AIR FAN OPERATING

Temperature indicators are OPERATING

Solutions

1. Turn the PRIMARY and SECONDARY air potentiometers (rotary knobs) to a position other than POSITION Ø (Zero). Check that the fans are working.
2. Check that the circuit breakers in the electrical box are in the On position.
3. Turn each of these circuit breakers Off and On.
4. If the problem persists or is repeated, contact your LAPIERRE EQUIPMENT service centre.

Temperature indicators ARE NOT WORKING

Solutions

1. Turn the control panel key to the Off position, then back to the On position.
2. Check that the circuit breakers in the electrical box are in the On position.
3. Turn each of these circuit breakers Off and On.
4. Make sure the main circuit breaker for the evaporator in the building's electrical box is in the On position.
5. Turn this main circuit breaker Off and On. Repeat Steps 1 to 3 above.
6. If the problem persists or is repeated, call your LAPIERRE EQUIPMENT service centre.

7.2 ONE OF THE PRIMARY OR SECONDARY AIR FANS IS NOT WORKING

Solutions

1. Turn the non-operating fan potentiometer to any position other than POSITION Ø (Zero). Check if the fan is running.
2. Turn the other potentiometer to a position other than POSITION Ø to check if there is a cross-over of the fan controls.
3. Check that the circuit breakers in the electrical box are in the On position.
4. Turn each of these circuit breakers Off and On.
5. If the problem persists or is repeated, contact your LAPIERRE EQUIPMENT service centre.

7.3 A TEMPERATURE INDICATOR DOES NOT WORK

Solutions

1. Turn the control panel key to the Off position, then back to the On position.
 - If the potentiometers as well as the fans are working, the indicator must be replaced. Contact your LAPIERRE EQUIPMENT service centre for a replacement.
2. Check that the circuit breakers in the electrical box are in the On position.
3. Turn each of these circuit breakers Off and On.
4. If the problem persists or is repeated, contact your LAPIERRE EQUIPMENT service centre.

7.4 ONE OR TWO TEMPERATURE INDICATORS SHOW ERRATIC VALUES OR AN ERROR MESSAGE

In normal operation, when the evaporator has been running for more than 15 minutes, the temperature of the combustion chamber must be at least twice that of the chimney. For example, if your chimney is at 842 °F (450 °C), the combustion chamber must be at least 1652 °F (900 °C).

FREQUENT REPLACEMENT OF SENSORS | Frequent replacement of one or both temperature sensors indicates that the building grounding is defective. This situation must be corrected. Electrical work must be done by a qualified contractor.

Solutions

1. When the evaporator is cold, both temperature indicators should show identical temperatures at ± 3.6 °F (2 °C).
 - Identify which temperature indicator is definitely in sync with the building's ambient temperature, and which is inconsistent.
 - Replace the temperature sensor in the indicator that is out of sync (see items 3 or 4 below, as applicable).
2. If both indicators show erratic values or error messages, contact your LAPIERRE EQUIPMENT service centre.
3. Combustion chamber indicator

If the combustion chamber temperature indicator shows an error message or values that are erratic, constantly unstable and significant, proceed with the following steps.

- Remove the temperature sensor connection cover.
 - It is located in the middle of the evaporator, on the right side when facing it.



SECTION 7 Troubleshooting kit (continued)

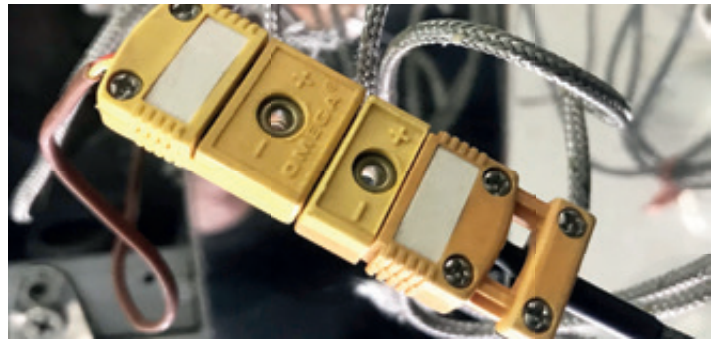
- Disconnect the temperature sensor and check the indicator display.
 - If the display shows a consistent error message, the temperature sensor must be replaced.

If the problem persists or is repeated, contact your LAPIERRE EQUIPMENT service centre.

4. Chimney indicator

If the chimney temperature indicator shows an error message or values that are erratic, constantly unstable and substantial, proceed with the following steps.

- Remove the temperature sensor connection cover.
 - It is located in the centre of the rear side of the evaporator.



- Disconnect the temperature sensor and check the indicator display.
 - If the display shows a consistent error message, the temperature sensor must be replaced.

If the problem persists or is repeated, contact your LAPIERRE EQUIPMENT service centre.

7.5 THE TEMPERATURE OF THE COMBUSTION CHAMBER IS 1.5 TIMES LOWER THAN THAT OF THE CHIMNEY

In normal operation, when the evaporator has been running for more than 15 minutes, the combustion chamber temperature should be double or more that of the chimney. For example, if your chimney is at 842 °F (450 °C), the combustion chamber must be at least 1652 °F (900 °C).

Some recommendations can be found later in this section.

LESS THAN 1.5 TIMES THE CHIMNEY TEMPERATURE | Your attention is required if, after one hour of operation, your combustion chamber temperature is less than 1.5 times the chimney temperature. For example, if your chimney is at 842 °F (450 °C), 1.5 times is 1247 °F (675 °C). Then proceed with the following solutions.

Solutions

1. Check if the combustion chamber fuel load in the combustion chamber is sufficient and well ignited.
 - If not, relight and/or feed the chamber with combustion chamber fuel.
2. Turn the potentiometer for the PRIMARY air fan(s) to POSITION 7.
 - Check for increased flame intensity through the combustion chamber window.
 - The flame intensity increases, but the combustion chamber temperature indicator does not increase.

SECTION 7 Troubleshooting kit (continued)

- o The combustion chamber temperature sensor must be replaced.
 - o See Troubleshooting Tip 7.4 above, item **No. 3: Combustion chamber indicator**.
 - The flame intensity increases, the combustion chamber temperature indicator increases, but the chimney temperature does not.
 - o The chimney temperature sensor must be replaced.
 - o See Troubleshooting Tip 7.4 above, item **No. 4: Chimney indicator**.
3. Both the combustion chamber and chimney temperature indicators increase, but the combustion chamber temperature remains below 1.5 times the chimney temperature.
- The lining and insulation of the combustion chamber and the smoke passage under the pans must be checked and repaired. Contact your LAPIERRE EQUIPMENT service centre.

RECOMMENDATIONS

- The chimney temperature must never exceed 1000 °F (540 °C).
- The temperature of the combustion chamber must be 1.5 times or more higher than that of the chimney.
- To ensure efficient production of quality syrup, the evaporator combustion chamber temperature must be maintained:
 - 42 in. (3-1/2 ft. / 106.68 cm) and smaller evaporators: between 1500 and 2000 °F (816 and 1093 °C),
 - 48 in. (4 ft. / 1.22 m) and larger evaporators: between 1250 and 1750 °F (677 and 954 °C).

7.6 POOR EVAPORATOR PERFORMANCE

Poor evaporator performance can be detected by unusually low values displayed by the combustion chamber and chimney temperature indicators.

Solutions

Poor performance can be caused by:

- a lower than usual sugar concentration,
- poor quality combustion chamber fuel,
- a lack of combustion air,
- a blocked chimney.

NOTE | It should be noted that a FUSION X² evaporator requires a combustion air supply equivalent to a 24 x 24 in. (60.96 x 60.96 cm) opening in one of the walls facing the exterior of the building.

SECTION 7 Troubleshooting kit (continued)

Solutions

Pay attention to the following points in case of poor evaporator performance.

Check, over a 60-minute period, with a building door open to the outside, to see if evaporator temperatures rise or remain the same. If temperatures rise, the building is too airtight and it is necessary to operate the evaporator with a 24 x 24 in. (60.96 x 60.96 cm) opening to the outside, or with a door or window open.

1. Check the sugar content of your concentrate.
 - Note this draft value for future reference.
2. About the combustion chamber fuel:
 - Has there been a change in the combustion chamber fuel used?
 - Is your combustion chamber fuel too damp?
 - Measure the moisture content of the combustion chamber fuel with a moisture meter or other device available at hardware stores.
 - o Combustion chamber fuel with a higher than normal moisture content, or higher than 25%, affects the performance of the evaporator.
3. With the evaporator cold, turn the PRIMARY air fan(s) potentiometer to POSITION 9 (maximum).
 - Check under the boiling rear pan to see if the fan(s) are running.
 - If they are running, check that air is passing through the combustion chamber floor.
 - o If no air is detected, remove the ash and retest.
 - If they are not running, correct the situation by referring to Troubleshooting Tip **7.2 One of the primary or secondary air fans is not working.**
 - o Then proceed with the airflow test through the floor of the combustion chamber in the previous sub-point.

ATTENTION | 48 in. (4 ft. / 1.22 m) evaporators and larger are equipped with two PRIMARY air fans. For this reason, you may detect air coming from the floor of the combustion chamber even if only one of the two fans is operating. The accumulation of a large amount of ash on the floor can limit the supply of primary combustion air to the combustion chamber and reduce the performance of the evaporator.

4. With the PRIMARY air fan(s) potentiometer in POSITION Ø (Zero), turn the SECONDARY air fan potentiometer to POSITION 9 (maximum).
 - Check under the boiling rear pan to see if the fan is running.
 - If it is running, check that air is flowing through the nozzles located at the top of the two sides of the combustion chamber.
 - If they are not running, correct the situation by referring to Troubleshooting Tip **7.2 One of the primary or secondary air fans is not working.**
5. Check your chimney for any blockage.

7.7 SOLID DEPOSITS (STAINING) IN THE PANS

It is important to understand that the solid deposits or staining problems vary significantly from one sugar bush to another, from one year to another, and even throughout the season.

The reference number of Brix degrees to be used is: **42° Brix**.

In the **BOILING** pan (accordion pleated)

Solutions

1. When the evaporator is in operation, check the sugar content of the concentrate entering the hot float. Ideally, the sugar content should be about 42 °Brix.
2. If the sugar content is higher, reduce the concentration level at the concentrator outlet until the staining problem is solved, or the sugar concentration is 42 °Brix.

In the **SIROP** pan (plate)

Solutions

Reverse the flow regularly, or as soon as any solid deposits appear.

7.8 THE FLOAT DOES NOT CLOSE COMPLETELY

If one of your floats leaks or drips, proceed with the following troubleshooting tips.

Cold float, boiling pan

Solutions

First check the mechanical condition of the valve.

- RODS: Is it straight or warped?
- PISTON: Is it flat in the valve or at an angle?
- O-RING: What is its condition?
- Lift the lever that connects the float to the water inlet valve.
 - o The water stops flowing with a small amount of pressure. Simply readjust the float using the adjustment rod that connects the float to the lever.
 - o The water still flows despite the following conditions.
 - ✓ A concentrate basin base **8 ft. (2.4 m) higher** than the float valve.
 - ✓ An O-ring in good condition or replaced.
 - ✓ The application of a large force on the valve.

In this case, the valve seat must be replaced with one of the following:

- ❖ EV406-011824S1, for floats with a 1.5 in. (3.81 cm) connector,
- ❖ EV406-011832S1, for floats with a 2 in. (5.08 cm) connector.

- ✓ The height from the base of the concentrate basin to the valve is **less than 8 ft. (2.4 m)** than the float valve.
- ✓ The application of a large force on the valve.

In this case, the O-ring of the valve must be replaced.

Hot float, syrup pan

Solutions

First check the mechanical condition of the valve.

- RODS: Is it straight or warped?
- PISTON: Is it flat in the valve or at an angle?
- O-RING: What is its condition?
 - Lift the water level adjustment rod.
 - o The water stops flowing by exerting a small amount of pressure.
Simply readjust the float using the adjustment rod that connects the float to the lever.
 - o The water still flows despite the following condition.
 - ✓ The application of a large force on the valve.
In this case, the O-ring of the valve must be replaced.

7.9 SYRUP COLOUR AND/OR TASTE PROBLEMS

The syrup is too dark

Solutions

1. The residence time of the syrup is too long.
2. Lower the water level in the pans in 1/4 in. (6.35 mm) increments at a time.
 - Wait 60 minutes between each sequence.

The syrup is too pale and/or not very tasty

Solutions

1. The residence time is too short.
2. Increase the water level in the pans in 1/4 in. (6.35 mm) increments at a time.
 - Wait 60 minutes between each sequence.

7.10 EXCESSIVE STEAM OUTPUT FROM THE HOODS

The ability of the steam chimney to generate draft is limited by the temperature of the steam itself. In modern, more airtight construction, it is possible that the steam chimney will not generate enough draft.

Solutions

1. ROPE OPERATED RAIN CAP If you use one, is it open?
2. DOOR TO THE OUTSIDE: Open a door to the outside when the evaporator is in operation.
 - The steam problem decreases: the building is too airtight for the chimney's draft capacity, so the evaporator must be operated with an open door.
 - The problem remains the same: extend the steam chimney by 4 ft. (1.22 m).

7.11 SMOKE EXHAUST

The FUSION X² evaporator uses combustion air fans that pressurize the combustion chamber. This pressurization can cause smoke to leak into various parts of the evaporator.

Solutions

The following are troubleshooting tips for smoke infiltration at the following locations.

1. AROUND THE DOOR

- Replace the door sealing ring.

2. UNDER THE PANS

- LEVEL: Check that the evaporator is level.
- LEGS: Check that the adjustable legs are all in contact with the floor.
- INSULATION JOINT Inspect the condition of the insulation joint between the pan and the evaporator frame. A damaged or blackened joint must be replaced.

3. BETWEEN THE PANS

- Check pans for deformations or dents. Replace as needed.
- Check the condition of the pan joint. Replace as needed.

4. THE CHIMNEY JOINTS

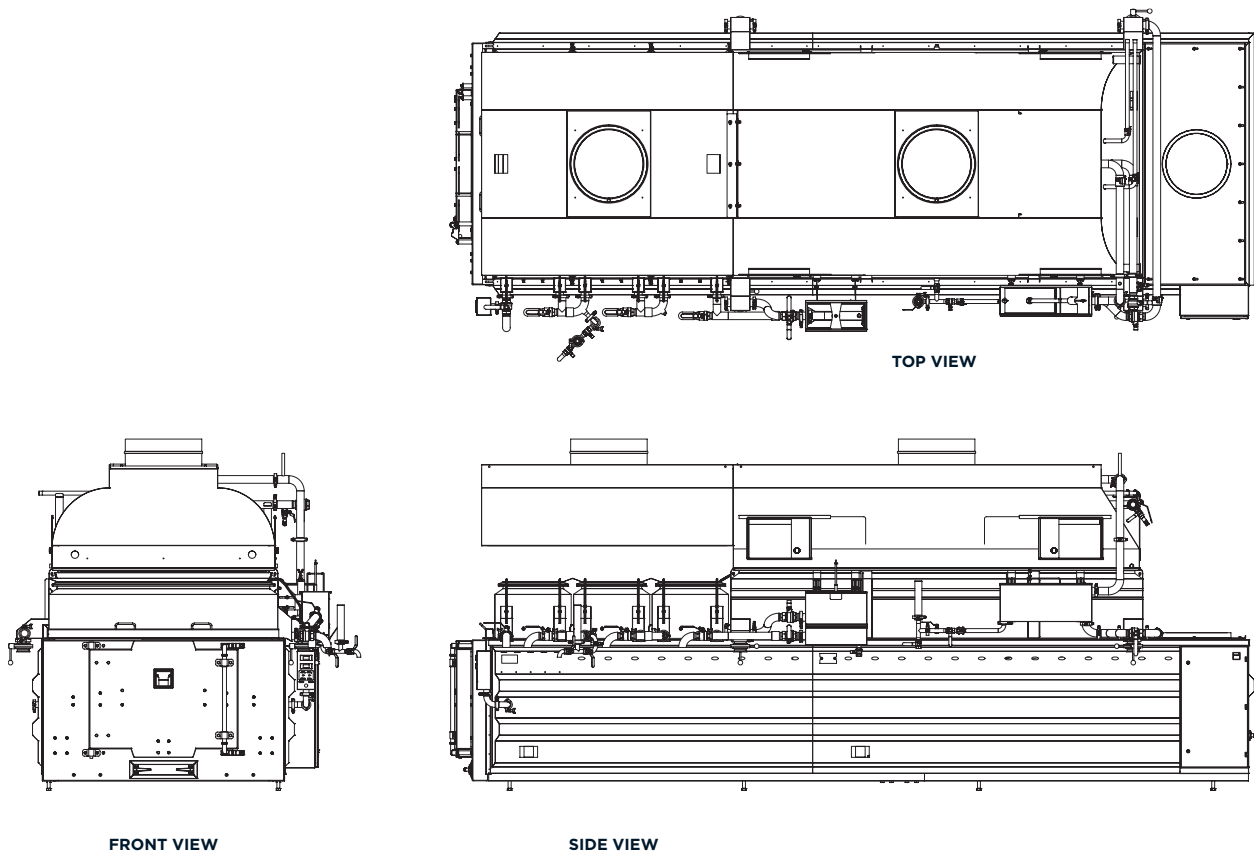
- SMOKING AT START-UP ONLY: No consequences.
- DOOR TO THE OUTSIDE OPEN:
 - SMOKING STOPS: If the smoke exhaust stops when an exterior door is opened, the building is too airtight and it is necessary to operate the evaporator with a 24 x 24 in. (60.96 x 60.96 cm) opening to the exterior.
 - SMOKING CONTINUES: If the smoke continues to escape when a door to the outside is opened, the chimney is blocked.
 - o RAIN CAP: Check to see if the rain cap is open or if it is not obstructed by debris such as a bird's nest, leaves, etc.
 - o DEBRIS: Check for debris inside the chimney.

FUSION X ² EVAPORATOR				BOILING PAN					SYRUP PAN			CHIMNEY, DIAMETER		STEAM VENTS	ELECTRIC POWER SUPPLY	
Model No.	Range	Overall dimensions		7 in. (17.78 cm)	Diamond 7	Diamond 9	Dimensions		Dimensions			Listed	Non-listed (single wall)	Diameter	Current	
		Width	Length				Width	Length	Quantity	Width	Length					
FF005-3008WWST	Standard	65 in. (1m65)	139 in. (3m53)	✓	✓	✓	30 in. (76.2 cm)	60 in. (1m52)	2	30 in. (76.2 cm)	18 in. (45.72 cm)	10 in. (25.4 cm)	14 in. (35.56 cm)	12 in. (30.48 cm)	240V / 40A	
	Deluxe			✓	✓	✓			1		36 in. (91.44 cm)					
FF005-3010WWST	Standard		163 in. (4m14)	✓	✓	✓		84 in. (2m13)	2		18 in. (45.72 cm)					
	Deluxe			✓	✓	✓			1		36 in. (91.44 cm)					
FF005-3610WWST	Standard	72 in. (1m83)	163 in. (4m14)	✓	✓	✓	36 in. (91.44 cm)	84 in. (2m13)	2	36 in. (91.44 cm)	18 in. (45.72 cm)	12 in. (30.48 cm)	15 in. (38.10 cm)	17 in. (43.18 cm)		
	Deluxe			✓	✓	✓			1		36 in. (91.44 cm)					
FF005-3612WWST	Standard		187 in. (4m75)	✓	✓	✓		108 in. (2m74)	2		18 in. (45.72 cm)					
	Deluxe			✓	✓	✓			1		36 in. (91.44 cm)					
FF005-3612WWST 50/50	Standard			✓	✓	✓			72 in. (1m83)		3					24 in. (60.96 cm)
	Deluxe			✓	✓	✓					1					72 in. (1m83)
FF005-4214WWST	Standard	77 in. (1m96)	211 in. (5m36)	✓	✓	✓	42 in. (1m07)	108 in. (2m74)	3	42 in. (1m07)	20 in. (50.8 cm)	14 in. (35.56 cm)	17 in. (43.18 cm)	17 in. (43.18 cm)		
	Deluxe			✓	✓	✓			1		60 in. (1m52)					
FF005-4812WWST	Standard	83 in. (2m11)	187 in. (4m75)	✓	✓	✓	48 in. (1m22)	108 in. (2m74)	2	48 in. (1m22)	18 in. (45.72 cm)	14 in. (35.56 cm)	18 in. (45.72 cm)	20 in. (50.8 cm)		
	Deluxe			✓	✓	✓			1		72 in. (1m83)					
FF005-4812WWST 50/50	Standard			✓	✓	✓		72 in. (1m83)	3		24 in. (60.96 cm)					
	Deluxe			✓	✓	✓			1		72 in. (1m83)					
FF005-4814WWST	Standard		211 in. (5m36)	✓	✓	✓		108 in. (2m74)	3		20 in. (50.8 cm)					
	Deluxe			✓	✓	✓			1		60 in. (1m52)					

FUSION X ² EVAPORATOR				BOILING PAN					SYRUP PAN			CHIMNEY, DIAMETER		STEAM VENTS	ELECTRIC POWER SUPPLY
Model No.	Range	Overall dimensions		7 in. (17.78 cm)	Diamond 7	Diamond 9	Dimensions		Dimensions			Listed	Non-listed (single wall)	Diameter	Current
		Width	Length				Width	Length	Quantity	Width	Length				
FF005-4816WWST	Standard	83 in. (2m11)	235 in. (5m97)	✓	✓	✓	48 in. (1m22)	120 in. (3m05)	3	48 in. (1m22)	24 in. (60.96 cm)	14 in. (35.56 cm)	18 in. (45.72 cm)	20 in. (50.8 cm)	240V / 40A
	Deluxe			✓	✓	✓			1		72 in. (1m83)				
FF005-4816WWST 50/50	Standard			✓	✓	✓		96 in. (2m44)	4		24 in. (60.96 cm)				
	Deluxe			✓	✓	✓			1		96 in. (2m44)				
FF005-6014WWST	Standard	95 in. (2m41)	211 in. (5m36)	✓	✓	✓	60 in. (1m52)	108 in. (2m74)	3	60 in. (1m52)	20 in. (50.8 cm)	16 in. (40.64 cm)	20 in. (50.8 cm)	20 in. (50.8 cm)	240V / 50A
	Deluxe			✓	✓	✓			1		60 in. (1m52)				
FF005-6016WWST	Standard		235 in. (5m97)	✓	✓	✓		120 in. (3m05)	3		24 in. (60.96 cm)	18 in. (45.72 cm)			
	Deluxe			✓	✓	✓			1		72 in. (1m83)				
FF005-6016WWST 50/50	Standard			✓	✓	✓		96 in. (2m44)	4		24 in. (60.96 cm)				
	Deluxe			✓	✓	✓			1		96 in. (2m44)				
FF005-7214WWST	Standard	107 in. (2m72)	211 in. (5m36)	✓	✓	✓	72 in. (1m83)	108 in. (2m74)	3	72 in. (1m83)	20 in. (50.8 cm)	18 in. (45.72 cm)	20 in. (50.8 cm)	24 in. (60.96 cm)	
	Deluxe			✓	✓	✓			1		60 in. (1m52)				
FF005-7216WWST	Standard		235 in. (5m97)	✓	✓	✓		120 in. (3m05)	3		24 in. (60.96 cm)				
	Deluxe			✓	✓	✓			1		72 in. (1m83)				
FF005-7216WWST 50/50	Standard			✓	✓	✓		96 in. (2m44)	4		24 in. (60.96 cm)				
	Deluxe			✓	✓	✓			1		96 in. (2m44)				

The specifications are subject to change without notice.

ILLUSTRATION 2 | Typical illustration of a FUSION X² evaporator





WARRANTY CERTIFICATE

1. Two-year warranty
2. Warranty certificate exclusions
 - 2.1 Observed conditions
 - 2.2 Costs and losses
 - 2.3 Evaporators
3. Disclaimer of liability
4. Making your warranty claim



KEEP YOUR PURCHASE INVOICE

It is very important to keep the original invoice for the purchase of your equipment or a legible copy of it. Otherwise, LAPIERRE EQUIPMENT INC. will not accept your warranty claim.

The term MANUFACTURER is used for LAPIERRE EQUIPMENT in order to lighten the text.

1. TWO-YEAR WARRANTY

The MANUFACTURER warrants that any new product is free from manufacturing, material and workmanship defects. The warranty is valid for a period of two years from the date of purchase of the product. It applies when the product meets normal conditions of installation, use and maintenance.

PRODUCT DEFECT. The appearance of a defect before the expiry date of the warranty must be reported immediately to the MANUFACTURER. The MANUFACTURER will then repair or replace the defective parts with equivalent new parts.

DEFECTIVE PARTS. Replaced defective parts become the property of the MANUFACTURER. They are recovered during the after-sales service process.

AESTHETICS. The aesthetic appearance of the products - parts and equipment - is covered by a warranty covering 7 days from the date of delivery.

2. WARRANTY CERTIFICATE EXCLUSIONS

2.1 OBSERVED CONDITIONS

This warranty becomes null and void where one or more of the following conditions are observed.

2.1.1 An altered, modified or removed serial number

2.1.2 Product damaged by:

2.1.2.1 User

- Use deemed abusive or negligent.
- Accident caused by the user.

2.1.2.2 Failure to comply with user manual instructions

- Failure by the user to follow the instructions in the user manual: safety instructions, installation of the equipment, start-up and operating procedures, maintenance and cleaning of the equipment, as well as any other installation recommendations provided by the MANUFACTURER.

2.1.2.3 Installation, modification, repair

- Installation in a place not suitable for normal use.
- Unauthorized repair or modification - not approved by our service centre - performed by the customer.
- A repair or modification carried out by a third party not authorized by the MANUFACTURER.

2.1.2.4 Parts

- The use of parts other than original MANUFACTURER parts.
- Use of parts obtained through a service centre, technician or distributor not authorized by the MANUFACTURER.
- Use of parts that cause deterioration or damage to the product.

2.1.2.5 Electricity

- A variation, electrical overload or excessive voltage.
- Poor power supply quality or electrical connections.

2.1.2.6 Cleaning products

- The use of cleaning products or acids that are not recommended, or used without following the recommendations of their respective manufacturers.

2.1.2.7 Non-controllable events

- Events that are beyond the MANUFACTURER's control such as mechanical shock; water damage or flooding; fire or burning; storm, earthquake or other natural or man-made disasters.

2.2 COSTS AND LOSSES

This warranty does not cover the following costs or losses.

2.2.1 Costs for:

- making the product accessible during a service call,
- the trip of the authorized technician during a service call,

SECTION 8 Our warranty (Warranty certificate) (continued)

- service calls for reasons other than those provided for in the warranty. The warranty applies when a defect or malfunction or a defect in manufacture, material or workmanship appears,
- service calls associated with product start-up at the beginning of the season, and shutdown at the end of the season or post-season. However, costs may be covered if specified in the purchase contract,
- service calls received when the warranty expires, i.e., two years from the date of purchase of the product,
- replacement of parts due to normal wear and tear such as seals, insulation joints and gaskets,
- annual equipment tune-ups,
- adjustments to evaporator burners.

2.2.2 For losses of:

- income caused by the quality of the syrup,
- production related to the provisions covered by this warranty.

2.3 EVAPORATORS

This warranty becomes void if the appearance of a defect is caused by use of:

- painted, treated wood or wood containing chemical products or any adhesive substances (glue),
- any agent added to the evaporators,
- wood evaporators: any fuel other than natural wood,
- oil evaporators: any fuel other than No. 2 fuel oil.

3. DISCLAIMER OF LIABILITY

The MANUFACTURER shall not be liable for incidental or consequential damages or implied property damage.

The MANUFACTURER shall not be liable for any direct or consequential loss of time, production or profits, inconvenience, cost of equipment acquisition or parts replacement or storage due to a warranty claim.

4. MAKING YOUR WARRANTY CLAIM

The following is the procedure for making a warranty claim.

- Contact your representative or distributor, our service centre or our head office to submit your warranty claim and plan the necessary after-sales service operation.
- IMPORTANT | For any claim, **the customer must submit a copy of their invoice**. Otherwise, the MANUFACTURER will not accept your claim.
- The MANUFACTURER will then proceed with an inspection of your equipment and confirm whether your warranty claim is accepted. If so, the MANUFACTURER will carry out an after-sales service operation in accordance with the provisions specified in Section 1. TWO-YEAR WARRANTY.
- The functioning equipment will then be returned to the customer in a *condition comparable* to that in which it was received. This *comparable condition* will have been previously determined by the MANUFACTURER and/or one of its representatives or distributors.
- This warranty after-sales service operation **does not extend the warranty period** of the equipment. The end date of the warranty remains the same, i.e., two years from the date of purchase of the product.

Warranty certificate: August 2022 (V03)

SECTION 10 PARTS AND CONSUMABLES

Parts for your FUSION X² evaporator or any other equipment manufactured at LAPIERRE EQUIPMENT are available at our main plant in Saint Ludger, Québec, Canada and at our service centers in Waterloo, Québec, Canada and Swanton, Vermont, USA. However, do not hesitate to contact us to locate the distributor nearest you.

HEAD OFFICE and MAIN PLANT

Lapierre Equipment Inc.
99 Rue de l'Escale
Saint-Ludger (QC)
G0M 1W0

Toll Free 1 833 548.5454
Telephone 819 548.5454
Fax 819 548.5460
info@elapierre.com

SERVICE CENTER and PRODUCTION PLANT

Lapierre-Waterloo-Small Inc.
201 Rue Western
Waterloo (QC)
J0E 2N0

Toll Free 1 833 548.5454
Telephone 450 539.3663
Fax 450 539.2660
info.lws@elapierre.com

SERVICE and DISTRIBUTION CENTER

Lapierre USA Swanton
102 Airport Access Road
Swanton, VT
05488

Telephone 802 868-2328
Fax 802 868-9281
info.usa@elapierre.com

www.elapierre.com

Location of the evaporator

- Position the evaporator so that the centre of the chimney connector (Illustration 1 No. 8) is aligned with the centre between two roof trusses.
 - See *Section 3.1.1: Determining the location of the evaporator* for more information.

Chimney Clearance

- Maintain a minimum clearance of 18 in. (45.72 cm) between the chimney wall and any nearby wood or other combustible materials, including those on the roof.
 - The minimum clearance may be reduced if a circular metal radiation shield with a diameter larger than 4 in. (10.16 cm) is installed at the chimney.
 - o The minimum clearance is then 9 in. (22.86 cm) between the wall of the radiation shield and combustible materials.

IMPORTANT | It is recommended that you contact your insurer in order to validate the compliance of your installation with its own requirements since they may differ from one insurance company to another.

- It may be necessary to modify the roof structure to respect the minimum required clearance between the chimney wall and any combustible material.

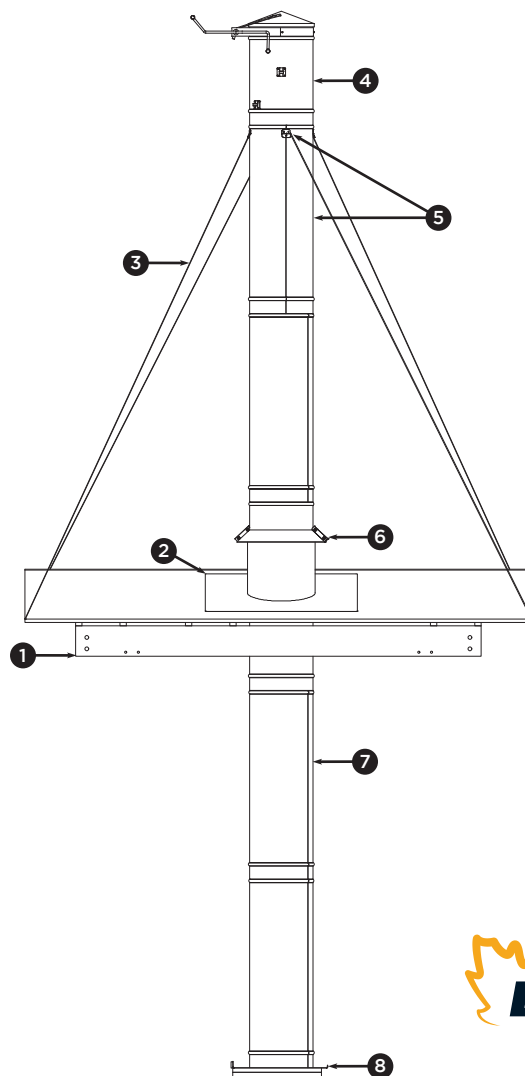
Before beginning the installation

- Screws and rivets.
 - Use rivets or self-tapping screws to connect the chimney sections. Rivets and screws are not included.
- Carefully inspect all sections of your chimney.
- First and last sections to be installed.
 - First section to be installed: the first section of your chimney, offered as an option, is equipped with a fitting for the installation of a thermometer. This section must be the first to be installed on the chimney connector (Illustration 1 No. 8) of the evaporator.
 - o Alternatively, you can use a single section (as shown in Illustration 1 No. 7).
 - Last section to be installed: The last section of your chimney to be installed must be the one with lugs (Illustration 1 No. 5) used to receive the steel guide wires.

Installing your chimney

- Install the first section of your chimney on the evaporator chimney connector (Illustration 1 No. 8). Place the plain end of the pipe against the connector, then the corrugated end upwards.
- Continue installing single chimney sections until one section passes through the roof.
- Then install the roof flashing (Illustration 1 No. 2).
 - Make sure the flashing is securely fastened to the roof.
 - Use high temperature silicone sealant to ensure that the seal between the flashing and the roof is perfectly watertight.
- Install the flashing rain tie (Illustration 1 No. 6) on the chimney.
 - Leave a 1 in. (2.54 cm) clearance between the top of the flashing and the base of the rain tie.
- Proceed with the final assembly below and install it afterwards.
 - Assemble the last two sections and the chimney cap (Illustration 1 No. 4) in the following order: a single section, the section with lugs (Illustration 1 No. 5), and the chimney rain cap last.
 - Attach the steel guide cables (Illustration 1 No. 3) to the lugs of the section.
 - If you are using a rope operated rain cap, install the actuator cables from the cap.
- Following the installation of this final chimney assembly, check and adjust its alignment with the part under the roof, then tighten the guide wires.

ILLUSTRATION 1 | Typical evaporator chimney



No. Part description

- | | |
|---|---|
| 1 | Roof type rafter |
| 2 | Roof flashing |
| 3 | Steel guide cables |
| 4 | Chimney cap (Illustrated: rope operated cap) |
| 5 | Section with lugs, for receiving steel guide cables |
| 6 | Rain tie, or pipe and flashing collar |
| 7 | Single section, typical 4 ft. (1.22 m) pipe |
| 8 | Chimney connector, installed on the evaporator |

Marking markers, cutting out the opening and fixing the hood collar

- Determine the path of the steam vent between the hood and where it will pass through the roof.
- Mark the centre of the vent pipe on the hood with a marker.
- Centre the supplied hood pipe collar (Illustration 1 No. 7) on this mark, then mark the opening to be cut in the hood.
 - Cut the hood opening.
 - To do so, you will need a jigsaw, manual or electric sheet metal shears, and a grinder.
- Position the hood pipe collar on the opening and secure it with rivets or self-tapping screws.

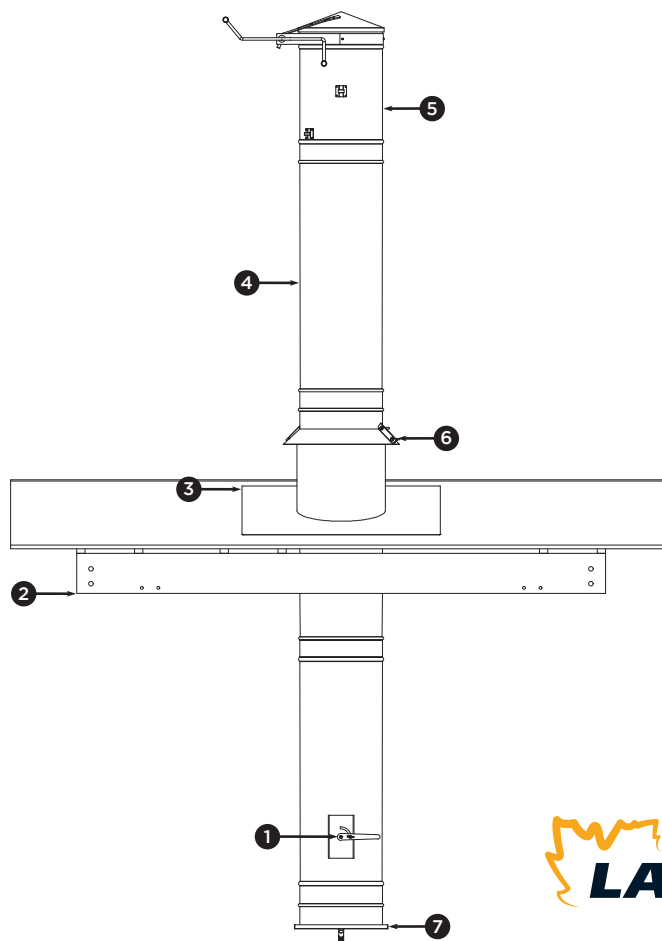
Before beginning the installation

- Screws and rivets.
 - Use rivets or self-tapping screws to connect the chimney sections. Rivets and screws are not included.
- Thoroughly inspect all the sections of your vent.
- First section to be installed.
 - If your evaporator is equipped with a preheater, the first section to be installed over the rear hood has a flue damper already installed in the section (as shown in Illustration 1 No. 1).
 - o If the evaporator does not have a preheater, you must install a single section (as shown in Illustration 1 No. 4).

Installing your steam vent

- Install the first section of your vent on the evaporator hood pipe collar (Illustration 1 No. 7). Place the corrugated end of the pipe against the hood pipe collar downward, then the plain end upward.
- Continue installing single vent sections until one section passes through the roof.
- Then install the roof flashing (Illustration 1 No. 3).
 - Make sure the flashing is securely fastened to the roof.
 - Ensure perfect waterproofing of the seal between the flashing and the roof using silicone sealing compound.
- Install the flashing tie over the vent (Illustration 1 No. 6).
 - Leave a 1 in. (2.54 cm) clearance between the top of the flashing and the base of the rain tie.
- Continue the installation with a single vent section above the roof (Illustration 1 No. 4). Typically, the installation will allow 3 to 4 ft. (91.44 cm to 1.22 m) above the roof.
- Install the rain cap (Illustration 1 No. 5).
 - If you are using a rope operated rain cap, install the actuator cables from the cap.
- Check and adjust the alignment of the steam vent with the part under the roof.

ILLUSTRATION 1 | Typical evaporator vent



No. Part description

- | | |
|----------|---|
| 1 | Damper equipped pipe for evaporator with preheater |
| 2 | Roof type rafter |
| 3 | Roof flashing |
| 4 | Single section, typical 4 ft. (1.22 m) pipe |
| 5 | Steam Vent Rain Cap (Illustrated: rope operated rain cap) |
| 6 | Rain tie, or pipe and flashing collar |
| 7 | Hood pipe collar, sliding |

1. WHAT IS OPTIFLAM™ FROM LAPIERRE EQUIPMENT?

OPTIFLAM™ is a computerized combustion control program designed and developed by LAPIERRE EQUIPMENT. It simplifies the operation of HURRICANE evaporators including the F5 (Force 5), F5 Turbo and Fusion X².

The OPTIFLAM™ can be used in three modes of operation:

- automatic,
- manual,
- and emergency.

2. WHY IS THE OPTIFLAM™ CONTROL PROGRAM CONVENIENT?

This program is convenient because it:

- controls the start-up cycle to prevent thermal shock,
- keeps the temperature of the combustion chamber constant:
 - by continuously adjusting the speed of the combustion air fans,
 - by identifying when a reload is needed,
 - and/or by informing the user to carry out this reload,
- controls the shutdown cycle,
- detects and warns the operator of certain anomalies,
- keeps a record of the evaporator operating statistics.

3. PROGRAM OPERATING PROCEDURES

The OPTIFLAM™ combustion control program is operated through a touch screen (Illustration 1) using four operating displays (Illustrations 3 to 6).



Illustration 1

• NAVIGATING BETWEEN OPERATING DISPLAYS

Navigation is done using the two arrows located in the upper left and right corners of the screen (Illustration 2).

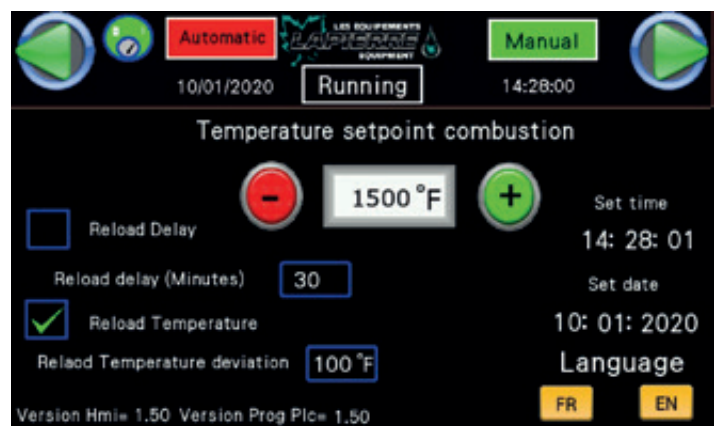


Illustration 2

• OVERVIEW OF THE OPERATING DISPLAYS

These are the program’s four operating displays in the order of navigation.

[1] Screen used in
MANUAL mode

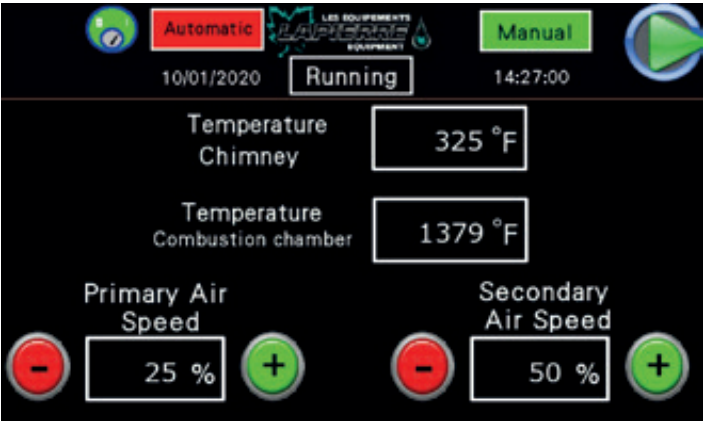


Illustration 3

[2] Display used to select
the OPERATING SETTINGS

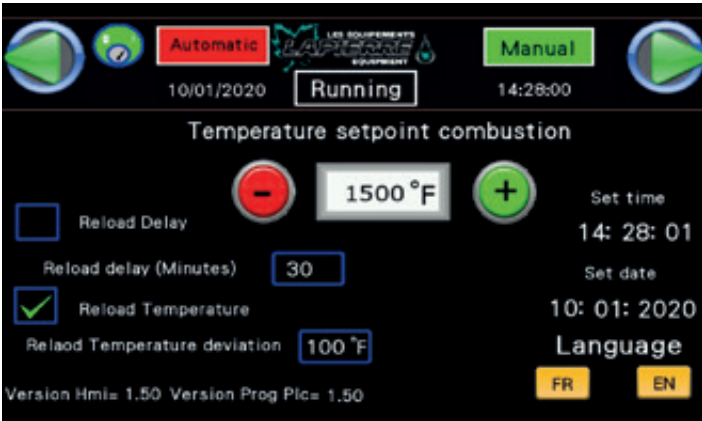


Illustration 4

[3] Screen used in
AUTOMATIC mode

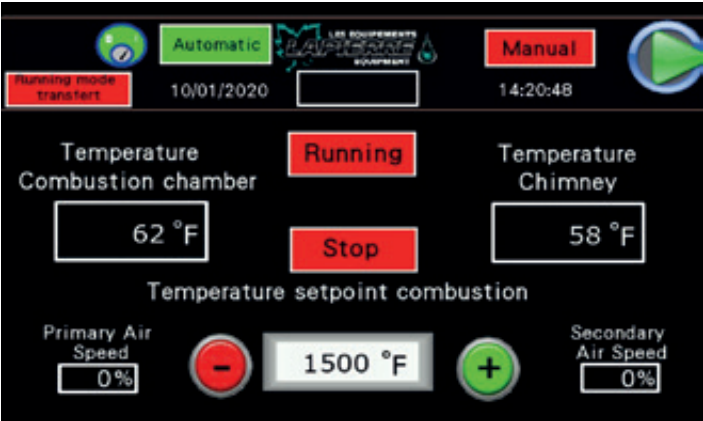


Illustration 5

[4] OPERATING STATISTICS
display screen

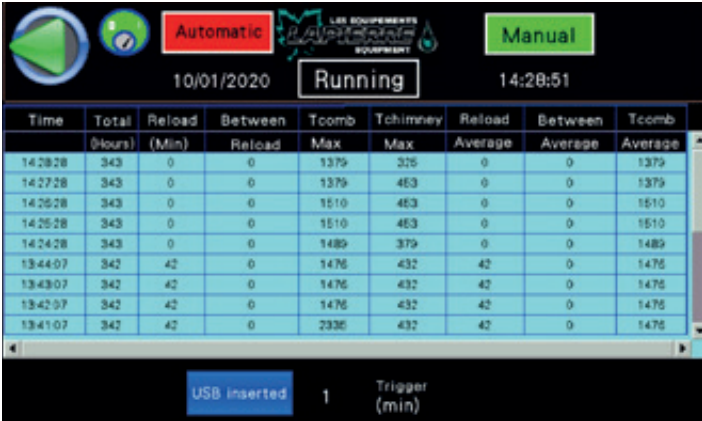


Illustration 6

• TEMPERATURE WARNING MESSAGES

The program screen may also display two warning messages: one to indicate a HIGH TEMPERATURE in the combustion chamber (Illustration 7), and the other to indicate a faulty TEMPERATURE SENSOR (Illustration 8).

Combustion chamber HIGH TEMPERATURE warning

This warning message appears when an overly large reload brings the combustion chamber temperature above 200 °F (93 °C) from the set point temperature for an extended period of time.

When this situation occurs, the OPTIFLAM™ takes appropriate measures in AUTOMATIC mode to reduce the temperature as quickly as possible.

For the set point temperature, see below *5. AUTOMATIC MODE, 5.1 Step 1, point 1.*



Illustration 7

Faulty TEMPERATURE SENSOR alarm

The OPTIFLAM™ uses the combustion chamber temperature sensor to maintain the chamber temperature at the designated set point.

When a sensor malfunction is detected, the program can no longer function correctly and it is necessary to switch to MANUAL mode.



Illustration 8

4. MANUAL MODE

MANUAL operation mode allows the operator to run the evaporator by controlling the speed of the air fans directly.

To do so, the operator must switch from the OPERATING SETTINGS display (Illustrations 4 and 9) to the MANUAL operation display (Illustrations 3 and 10).

- Press the [Manual] key at the top right of the OPERATING SETTINGS display (Illustration 9).

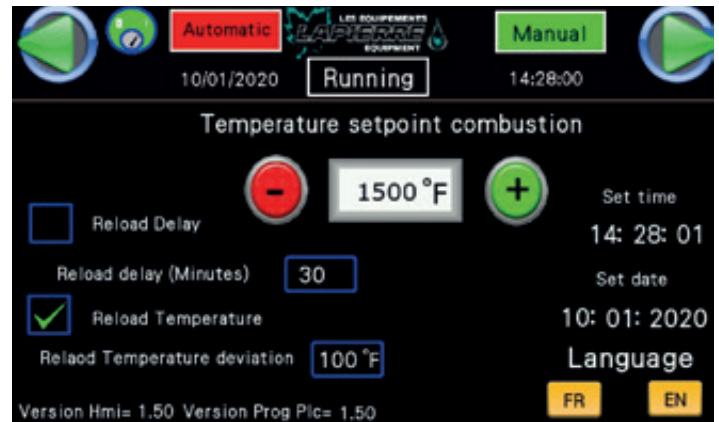


Illustration 9

- You will then be directed to the MANUAL operating mode display (Illustration 10).

Adjust the speed of the combustion air fans using the two sets of keys [-] and [+] located at the bottom of the display.

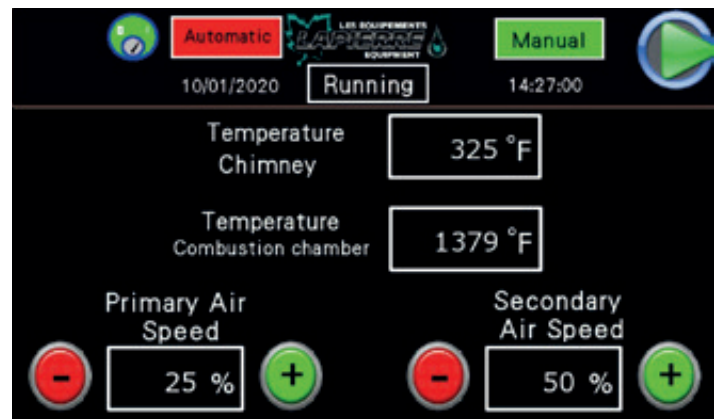


Illustration 10

- The CHIMNEY and COMBUSTION CHAMBER TEMPERATURES are displayed continuously in the centre of the display in MANUAL mode (Illustration 10).

4.1 COMBUSTION CHAMBER FUEL RELOADS

To perform a COMBUSTION CHAMBER FUEL RELOAD, proceed as follows (Illustration 10):

- turn Off the PRIMARY air fan(s) by setting the value to 0%,
- adjust the SECONDARY air fan speed to 10%,
- wait 5 seconds,
- perform the reload,
- restart the PRIMARY air fan(s) by adjusting the speed to the desired percentage,
- also adjust the SECONDARY air fan speed to the desired percentage.

4.2 EVAPORATOR SHUTDOWN

To shut down the evaporator, proceed as follows (Illustration 10):

1. Adjust the PRIMARY air fan(s) speed to 20%,
2. Adjust the SECONDARY air fan speed to 40%,
3. Wait until the combustion chamber temperature drops below 400 °F (204 °C).

5. AUTOMATIC MODE

This fully automated mode of operation of the OPTIFLAM™ optimizes the speed of the combustion air fans in order to maintain a constant temperature in the combustion chamber. This mode of operation is done in five steps.

These five steps include setting the parameters, starting the evaporator, evaporator or combustion operation, reloading with combustion chamber fuel, and stopping the evaporator.

5.1 Step 1: SETTING THE PARAMETERS

The settings can be made when the key on the evaporator control panel is in the On position. This can be done before the evaporator is started or while it is running.

- **Identifying the settings on the operating display**

The OPERATING SETTINGS display (Illustrations 4 and 11) allows you to set the following parameters:

1. COMBUSTION CHAMBER TEMPERATURE

Choose the desired set point temperature of the combustion chamber using the [-] and [+] keys.

2. ADJUST TIME | ADJUST DATE

Allows you to set the program to the current date and time.

3. LANGUAGE | EN-FR

Choose the desired language for the OPTIFLAM™ program: English or French.

4. RELOAD TEMPERATURE | TEMPERATURE DIFFERENCE RELOAD

The option of using a drop in temperature in the combustion chamber to perform a reload and specify how many degrees below the combustion chamber temperature set point (item #1) you wish to receive a warning for reloads.

5. RELOAD DELAY | RELOAD DELAY (MINUTES)

The option of using a timer to perform a reload and specify the time between each reload warning.

The operator can use either of the options offered in points 4 and 5 or use both simultaneously.

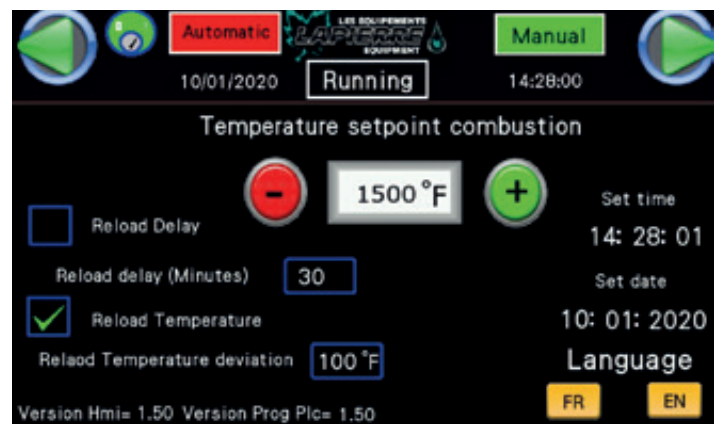


Illustration 11

• Setting the operating parameters

To set the operating parameters, proceed as follows (Illustration 12):

1. Touch the value to be changed on the touch screen to bring up the number pad,
2. Enter the required value,
3. Press the [ENTER] key.

5.2 Step 2: STARTING THE EVAPORATOR

Proceed as follows to start the evaporator.

First prepare the evaporator with a load of combustion chamber fuel ready for ignition.

Then go to the AUTOMATIC mode page (Illustration 5 and 13) by pressing the [AUTOMATIC] key at the top left of the display.

When you are on this page (Illustration 13) and your combustion chamber fuel load is ready to be lit, proceed as follows:

1. Light the combustion chamber fuel load.
2. Close the evaporator door.
3. Press the [RUNNING] key in the centre of the display.
4. The OPTIFLAM™ then switches on.

Continue the operation as follows:

5. At the start signal, the evaporator runs for 3 minutes.
6. After this time, a combustion chamber fuel reload request is indicated by two warnings:
 - the blue light on the touch screen housing flashes,
 - and the message “RELOAD” is displayed under the LAPIERRE identifier on the operating display.
7. The cycle described in #6 will then repeat every 5 minutes until the combustion chamber set point temperature is reached.
 - Using a long poker, push the combustion chamber load backwards. Then place a one to two log thick combustion chamber fuel reload on the entire surface of the firebox. Start by loading the rear and finish at the front.
8. When the temperature of 1000 °F (540 °C) is reached in the combustion chamber, the OPTIFLAM™ switches to AUTOMATIC mode. The message “OPERATION” will appear under the LAPIERRE ID on the operation display.



Illustration 12

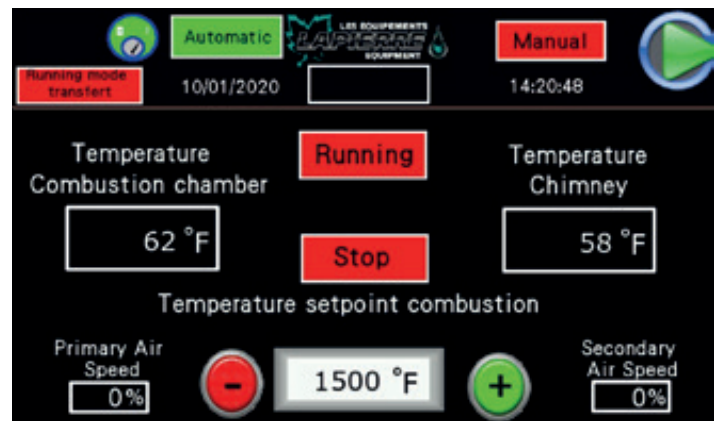


Illustration 13

• Does the start-up time seem too long?

If the start-up time seems too long, you can go directly to Step 3: EVAPORATOR OR COMBUSTION OPERATION. Proceed as follows.

From the page in AUTOMATIC mode (Illustration 5 and 13):

1. Press the [RUNNING MODE TRANSFER] key at the top left of the screen.
2. Then authorize the change by pressing the [YES] key in the pop-up window that appears at the top left of the display (Illustration 14).

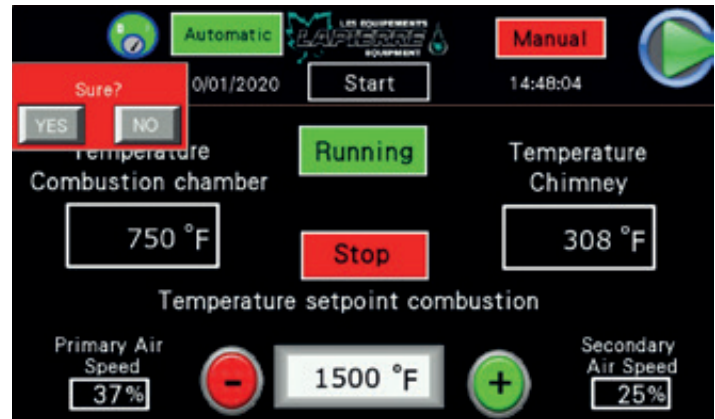


Illustration 14

5.3 Step 3: EVAPORATOR OR COMBUSTION OPERATION

The OPTIFLAM™ then switches on. The program constantly adjusts the speed of the combustion air fans to maintain the set temperature.

If the set point temperature can no longer be maintained, a request for a combustion chamber fuel reload is indicated by two warnings:

- the blue light on the touch screen housing flashes,
- and the message “RELOAD” is displayed under the LAPIERRE identifier on the operating display.

Then proceed with the following step No. 4.

5.4 Step 4: RELOADING WITH COMBUSTION CHAMBER FUEL

Follow the steps below to reload the combustion chamber fuel:

1. Press the blue light, which is also a push button, or the “RELOAD” message on the operating display to signal that a reload will be performed.
2. The blue light will go out and the OPTIFLAM™ will stop the PRIMARY air fan(s) and slow down the SECONDARY air fan speed to a preset minimum.
3. After 5 seconds, the blue light will glow steadily and the message “RELOAD” will appear on the operating display.
4. The combustion chamber door can then be safely opened and the reload can be done.



OBSERVE THE 5 SECOND DELAY

Failure to observe the 5-second delay can cause **flashback and smoke** when the combustion chamber door is opened. These flashbacks can cause damage to the building and **significant injury and discomfort to the operator and others in the vicinity of the equipment.**

5. When reloading is complete, close the combustion chamber door.
6. Then press the blue push button, which is also the indicator light, or the “RELOAD” message on the operating display to indicate that the reload is complete.

The OPTIFLAM™ then returns to the previous step, following a pre-set program of a specific period of time to ensure a quick re-start of the combustion while limiting smoke emission.

5.5 Step 5: STOPPING THE EVAPORATOR

Proceed as follows to shut down the evaporator:

1. Press the [STOP] key on the operating display,
 - the key on the evaporator control panel can be turned to the Off position and removed.
- The program and fans continue to run here, but the touch screen, while still on, will not accept any commands.
- It is also possible that the fans stop and restart a few times.
- The evaporator also continues to evaporate for several more minutes, so it is important not to turn Off the concentrate supply to the evaporator in order to prevent one of the pans from running dry.

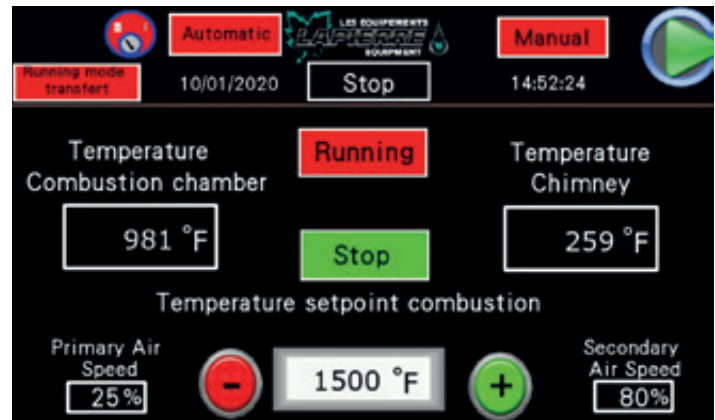


Illustration 15

6. EMERGENCY MODE

In the event that the OPTIFLAM™ combustion control program stops working, there is an EMERGENCY mode that allows the evaporator to continue to operate and then be safely shut down.



The EMERGENCY operation mode should only be used to stop the evaporator.

WE SUGGEST THAT YOU PHOTOCOPY THIS PAGE AND PLACE IT IN PLAIN VIEW NEAR THE EVAPORATOR.

Here you will find the OPTIFLAM™ control box (Illustration 16):

- [1] selector for Off or On position,
- [2] selector for manual (MAN) or automatic (AUTO) mode,
- [3] potentiometer (rotary knob) for controlling the speed of the PRIMARY combustion air fan(s),
- [4] potentiometer (rotary knob) for controlling the speed of the SECONDARY combustion air fan.

To activate the EMERGENCY mode, proceed as follows:

1. Set the MAN/AUTO Selector [2] to manual [MAN].
2. Then control the speed of the combustion fans with the two potentiometers [3 and 4].
3. Bring the evaporator to a safe stop.
 - The operation of the evaporator is now the same as in MANUAL mode, except for the combustion chamber and chimney temperatures which are no longer displayed on the operating display.

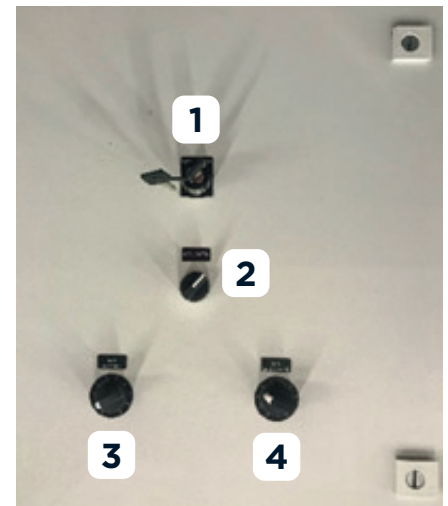


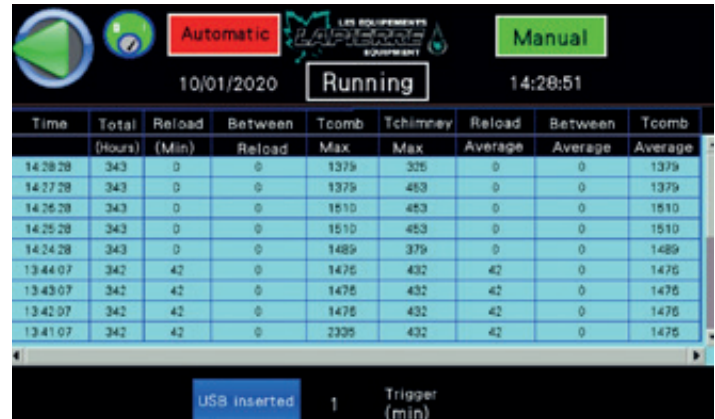
Illustration 16

7. OVERVIEW OF THE OPERATING STATISTICS DISPLAY SCREEN

The OPTIFLAM™ records several settings that allow the operator to review the evaporator's operating statistics.

Here is the overview of the content that you will find in the turquoise boxes of this screen (Illustration 17).

- **TIME:** Time of day when the settings are recorded. The current date is shown in the top banner.
- **TOTAL (Hours):** Total operating hours of the OPTIFLAM™ and the evaporator.
- **RELOAD (min):** Time taken to perform a reload, shown in seconds.
- **BETWEEN Reload:** Total reload time, indicated in minutes.
- **TCOMB (Max):** Maximum temperature of the combustion chamber between two setting records, indicated in degrees Fahrenheit (°F).
- **TCHIMNEY (Max):** Maximum chimney temperature between two setting records, shown in degrees Fahrenheit (°F).
- **RELOAD (Average):** Average time required to perform a reload, indicated in seconds.
- **BETWEEN (Average):** Average reload time, indicated in minutes.
- **TCOMB (Average):** Average temperature of the combustion chamber, indicated in degrees Fahrenheit (°F).
- **TCHIMNEY (Average):** Average chimney temperature, indicated in degrees Fahrenheit (°F). Not shown in Illustration 17, but existing.



Time	Total (Hours)	Reload (Min)	Between Reload	Tcomb Max	Tchimey Max	Reload Average	Between Average	Tcomb Average
14:28:28	343	0	0	1379	325	0	0	1379
14:27:28	343	0	0	1379	453	0	0	1379
14:26:28	343	0	0	1510	453	0	0	1510
14:25:28	343	0	0	1510	453	0	0	1510
14:24:28	343	0	0	1489	379	0	0	1489
13:44:07	342	42	0	1475	432	42	0	1475
13:43:07	342	42	0	1475	432	42	0	1475
13:42:07	342	42	0	1475	432	42	0	1475
13:41:07	342	42	0	2335	432	42	0	1475

Illustration 17



We sincerely appreciate your trust.

Thank you!



LAPIERRE EQUIPMENT © All rights reserved - 2022

99 Rue de l'Escale, Saint-Ludger (QC) Canada G0M 1W0
819 548.5454 | 1 833 548.5454 | info@elapierre.com | www.elapierre.com